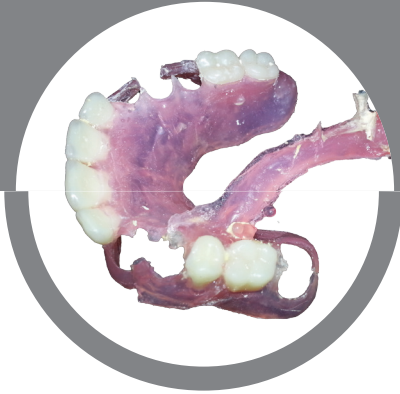


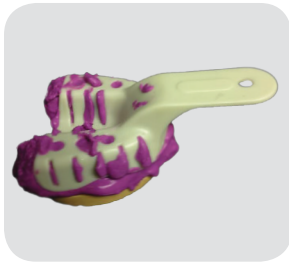
REPAIR



iFlex™ & Unbreakable™ Repair

Step-by-step guide

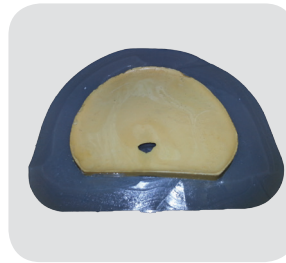
Important Note: iFlex™ and Unbreakable™ have the same repair method with one exception: **with iFlex™ there is no Fusing Liquid required. Please skip STEP 16.**



1. Doctor takes alginate impression with the partial in place.



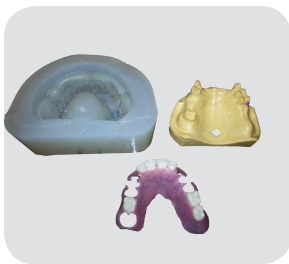
2. Remove the tray and assess repair. Tooth and clasp will be added.



3. Duplicate with the partial denture in place.



4. Duplicated.



5. Remove partial from original model and place into duplicated mold.



6. Like so.



7. Pour duplicate.



8. Once stone sets, remove from gel. Make sure to remove any stone excess around repair site.





9. Before waxing take down lingual height to allow room for wax and sprue.



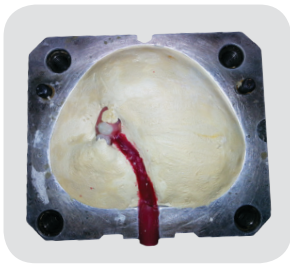
10. Wax the repair segment. Overlap the wax with the existing material to create a stronger bond.
Note: Space created for wax and sprue.



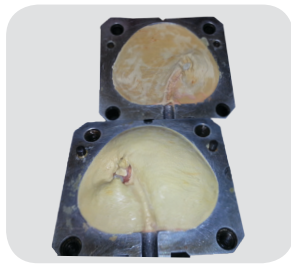
11. This repair will also include clasp.



12. Flask case covering everywhere except repair area.

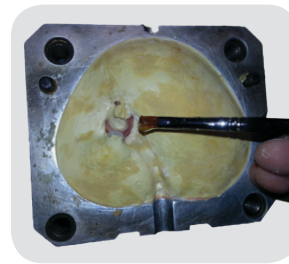


13. Run sprue to wax site and pour 2nd half.



14. Boil out, *for optimal results flask should be very hot when injecting repairs.

TIP: Synchronize injection so when boilout phase is over you have approximately 5 minutes left to inject.



15. Paint separator on stone surface only.
Note: The separator should not be in contact with the Fusing Liquid.



16. Apply one drop of fusing liquid with a dropper or brush to repair site at least 3 min. before injecting. Close and inject.
Note: The combination of a hot flask and fusing liquid is essential.



Fusing Liquid
Item # 3812-01



17. When flask cools, open and proceed to finishing and polishing.



End result.



NOTE: iFlex™ repair process is the same as Unbreakable™ without Fusing Liquid (step 16).

TIP: Synchronize steps 14 - 16 so when boilout phase is over you have approximately 5 minutes left to inject. The combination of a hot flask and fusing liquid is essential for a successful repair.

